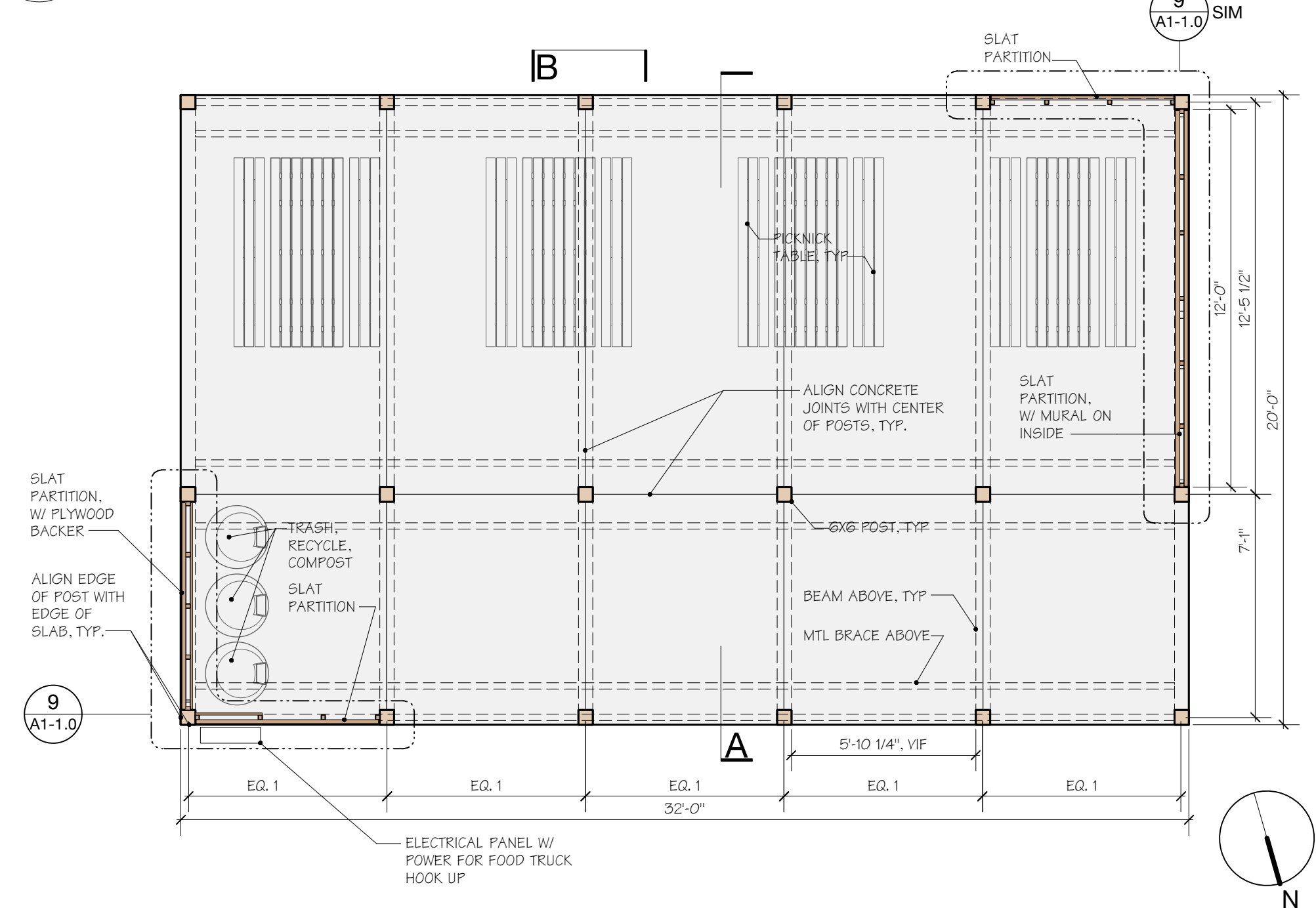
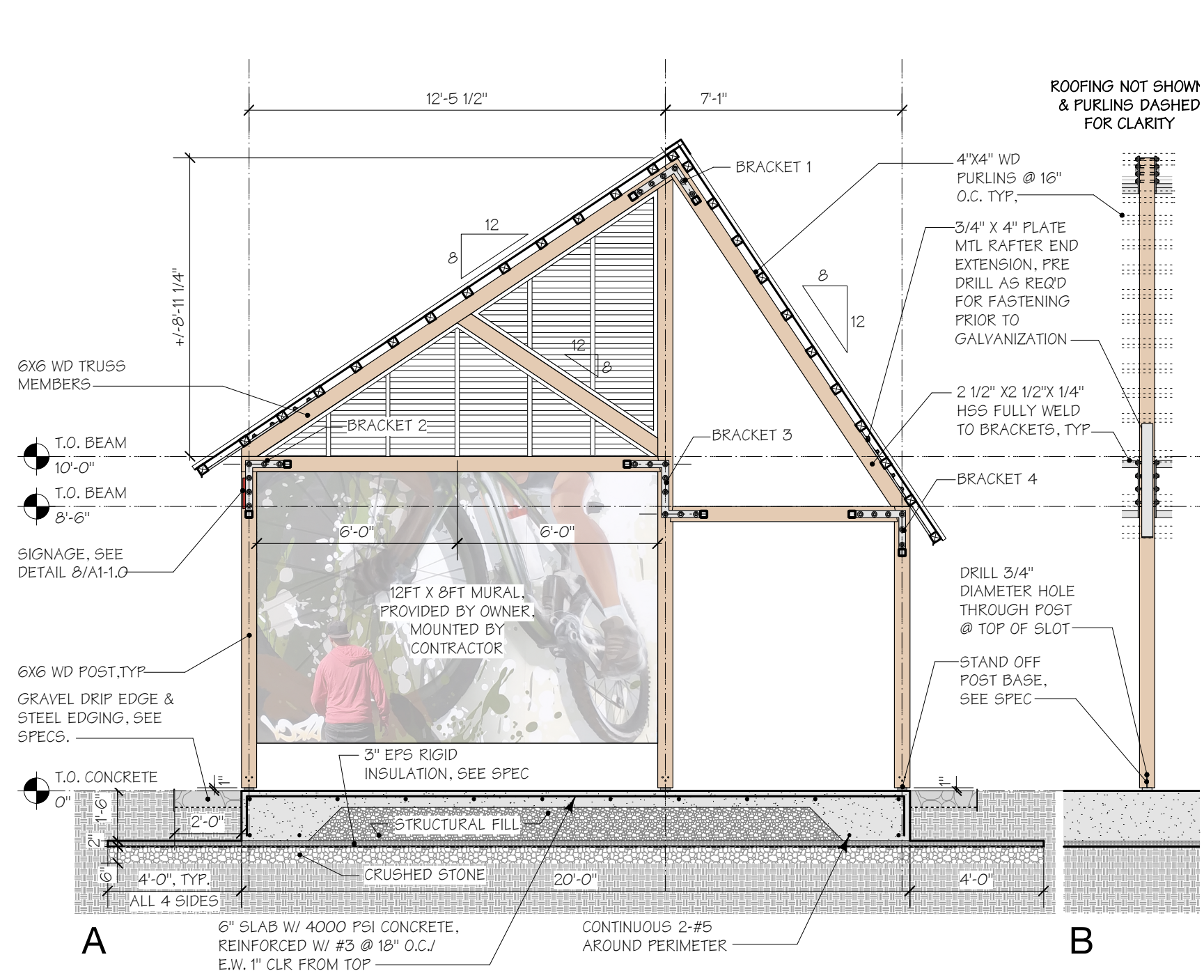


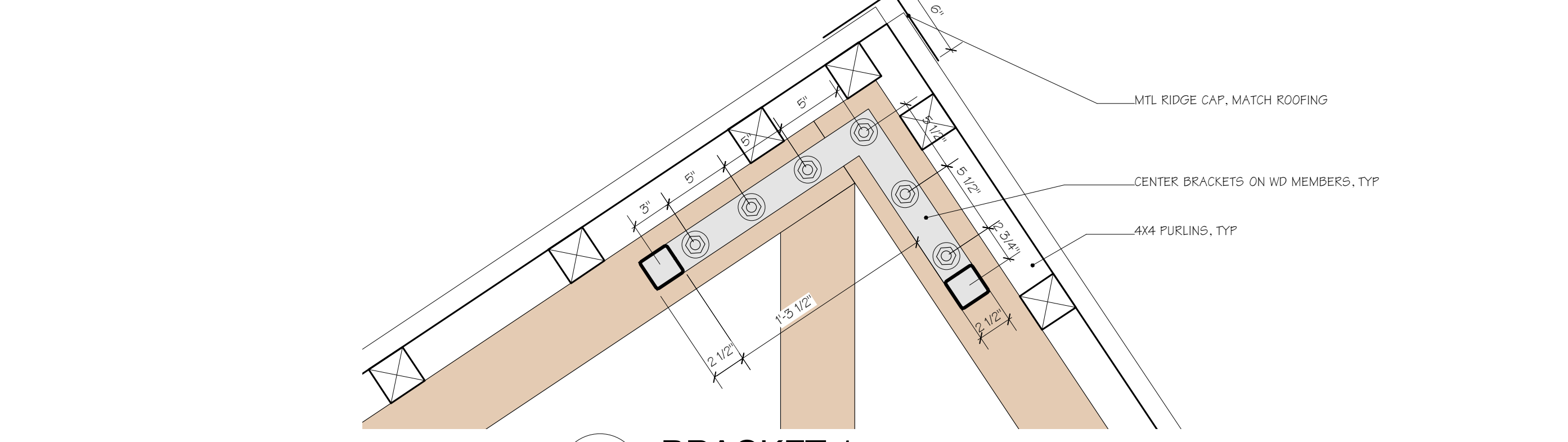
3 ELEVATIONS
Scale: 1/4" = 1'-0"



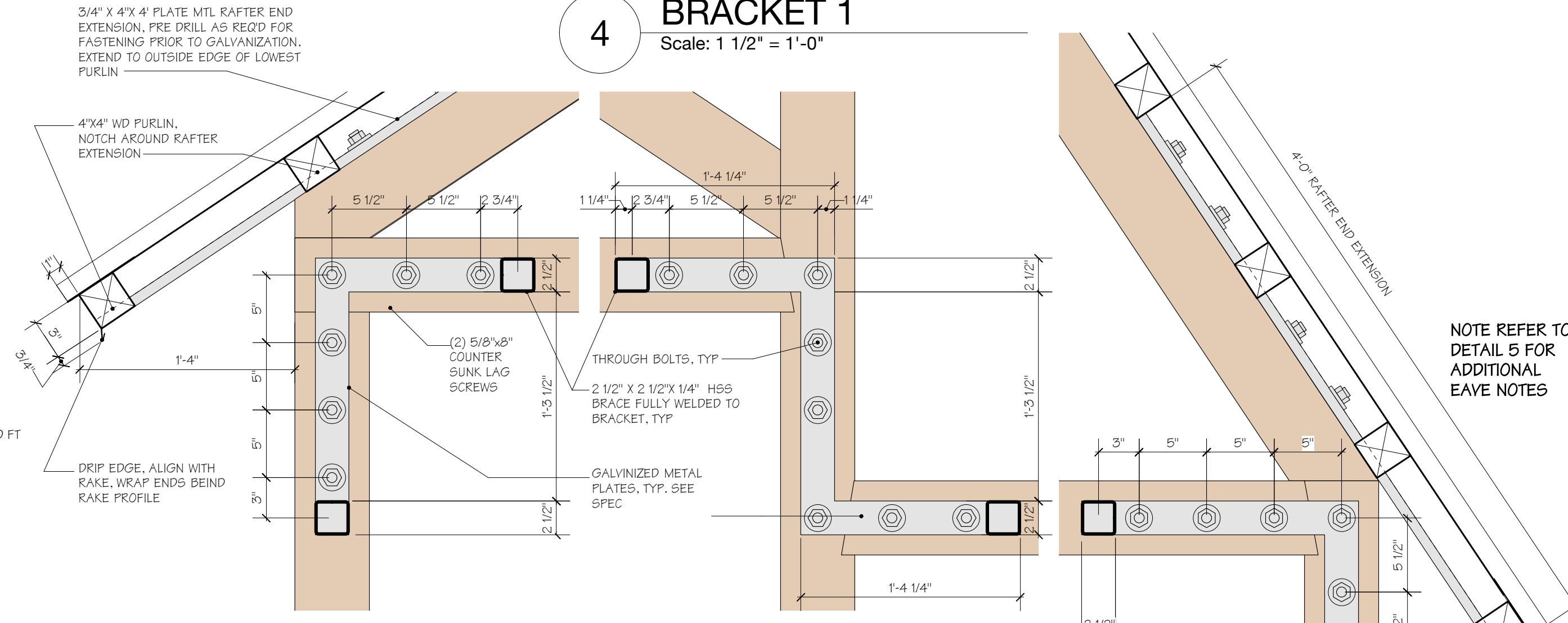
1 PLAN
Scale: 1/4" = 1'-0"



2 SECTION
Scale: 1/4" = 1'-0"



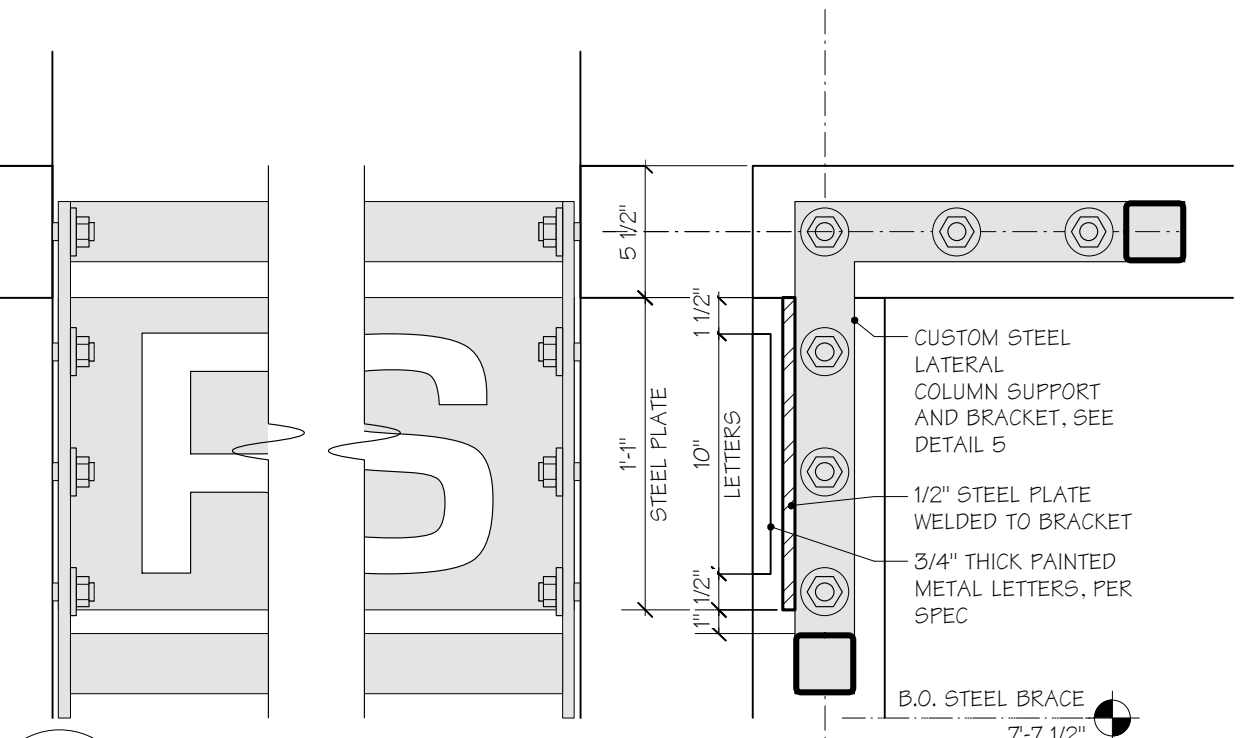
4 BRACKET 1
Scale: 1 1/2" = 1'-0"



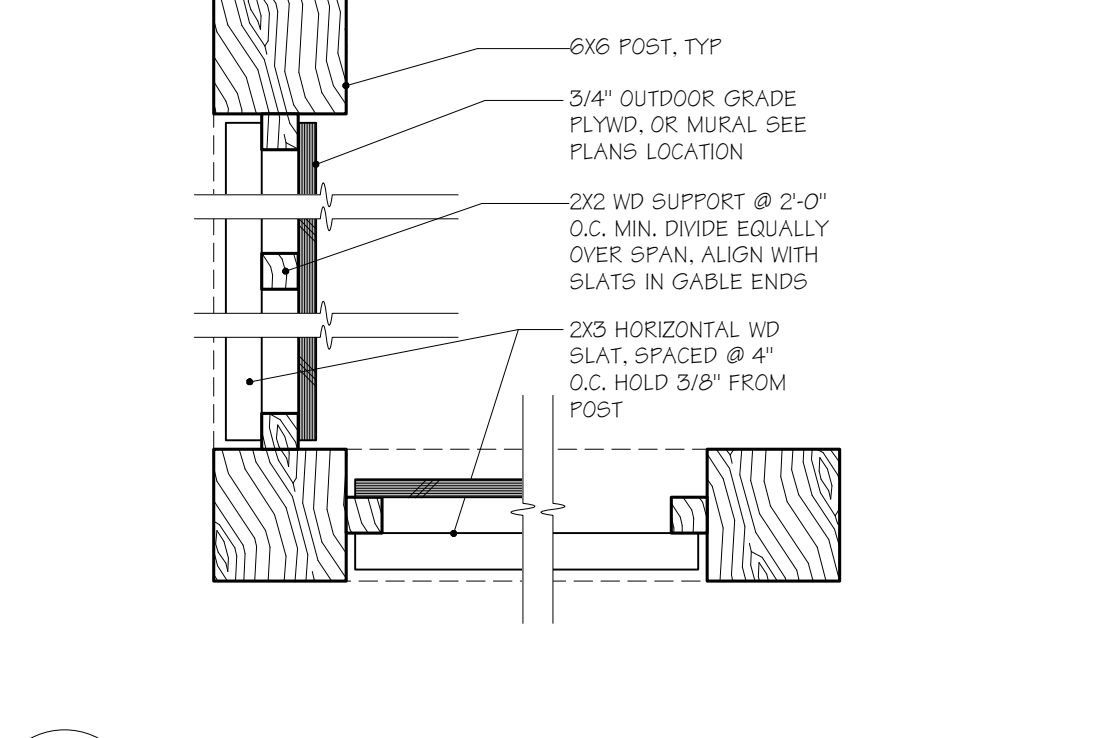
5 BRACKET 2 & EAVE DETAIL
Scale: 1 1/2" = 1'-0"

6 BRACKET 3
Scale: 1 1/2" = 1'-0"

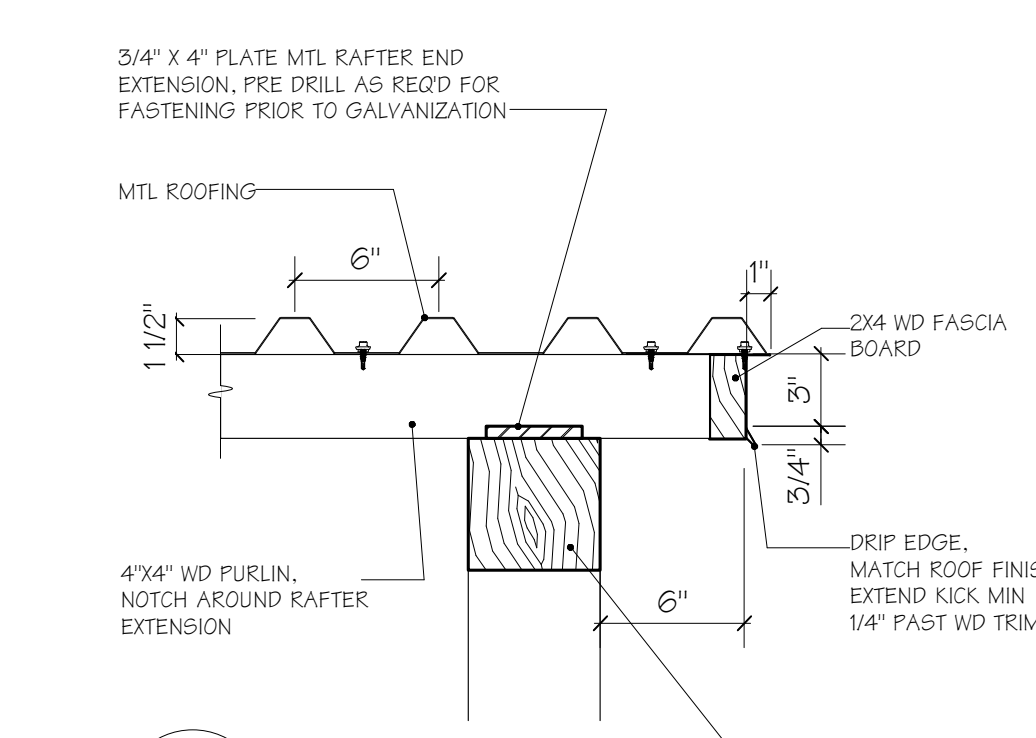
7 BRACKET 4
Scale: 1 1/2" = 1'-0"



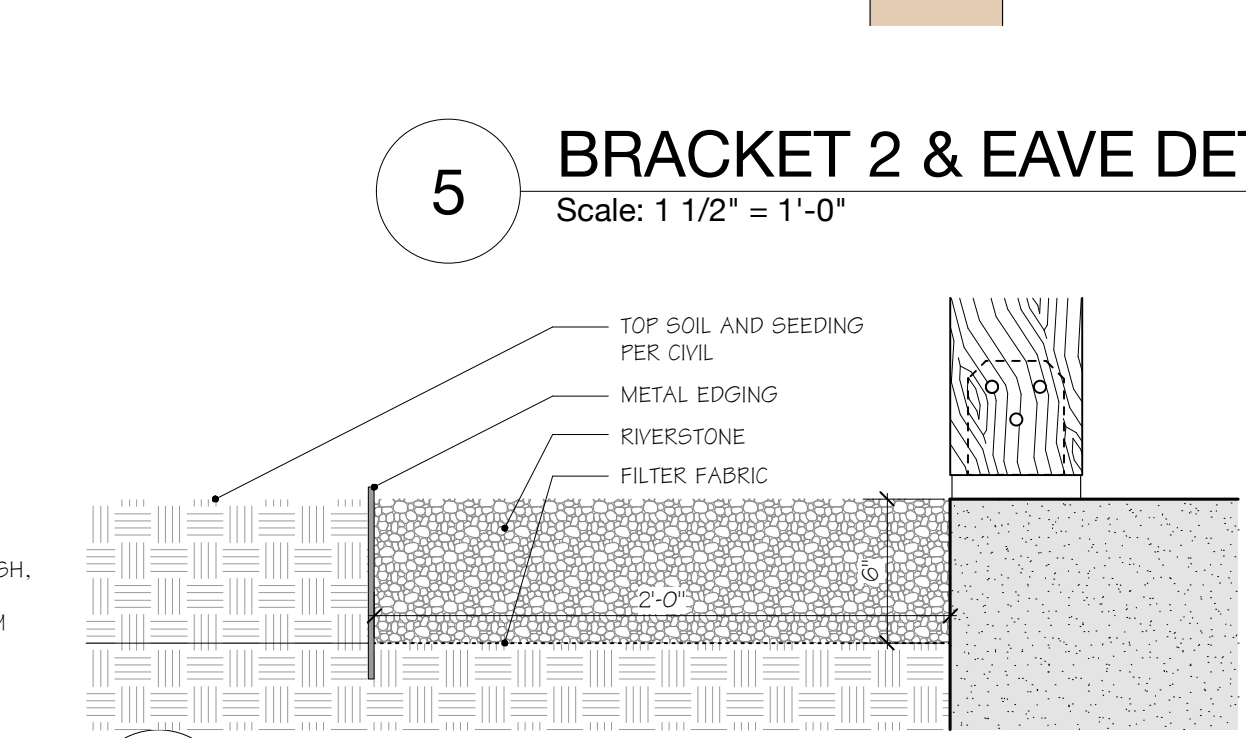
8 SIGNAGE DETAIL
Scale: 1 1/2" = 1'-0"



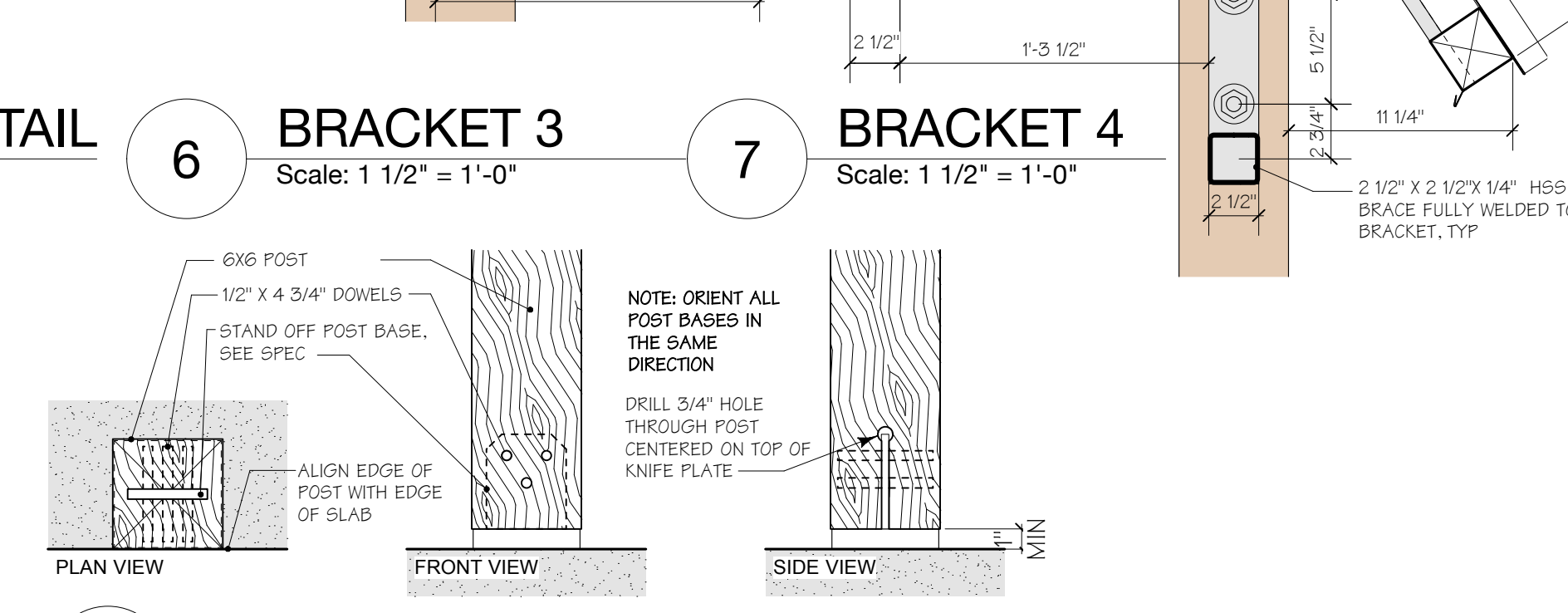
9 WOOD SLAT & MURAL DETAIL
Scale: 1 1/2" = 1'-0"



10 RAKE DETAIL
Scale: 1 1/2" = 1'-0"



11 DRIP EDGE DETAIL
Scale: 1 1/2" = 1'-0"



12 POST BASE DETAIL
Scale: 1 1/2" = 1'-0"

THREE RIVERS PATH • TRAILHEAD

ST. JOHNSBURY, VERMONT

COPYRIGHT © 2019 ALL RIGHTS RESERVED
DUNCAN • WISNIEWSKI ARCHITECTURE
A Professional Corporation

DRAFT FOR REVIEW

Duncan
Wisniewski
ARCHITECTURE

255 SOUTH CHAMPLAIN STREET
BURLINGTON, VERMONT 05401
T. 802.864.6693

DATE: 04.02.19
DRAWN: TB

A1-1.0