





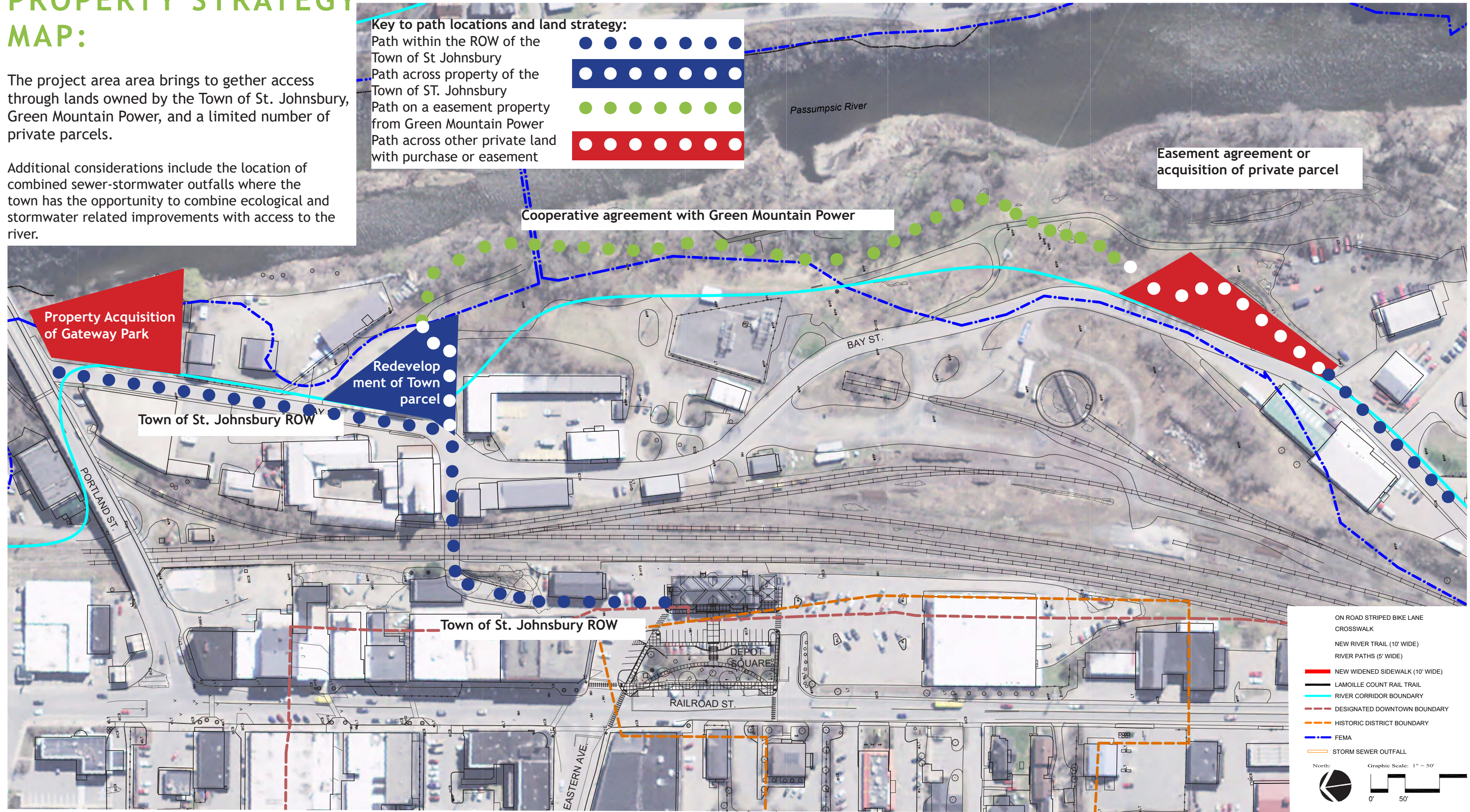
# PROPERTY STRATEGY MAP:

The project area area brings to gether access through lands owned by the Town of St. Johnsbury, Green Mountain Power, and a limited number of private parcels.

Additional considerations include the location of combined sewer-stormwater outfalls where the town has the opportunity to combine ecological and stormwater related improvements with access to the river.

**Key to path locations and land strategy:**

- Path within the ROW of the Town of St Johnsbury
- Path across property of the Town of ST. Johnsbury
- Path on a easement property from Green Mountain Power
- Path across other private land with purchase or easement



Cooperative agreement with Green Mountain Power

Easement agreement or acquisition of private parcel

Property Acquisition of Gateway Park

Redevelopment of Town parcel

Town of St. Johnsbury ROW

Town of St. Johnsbury ROW

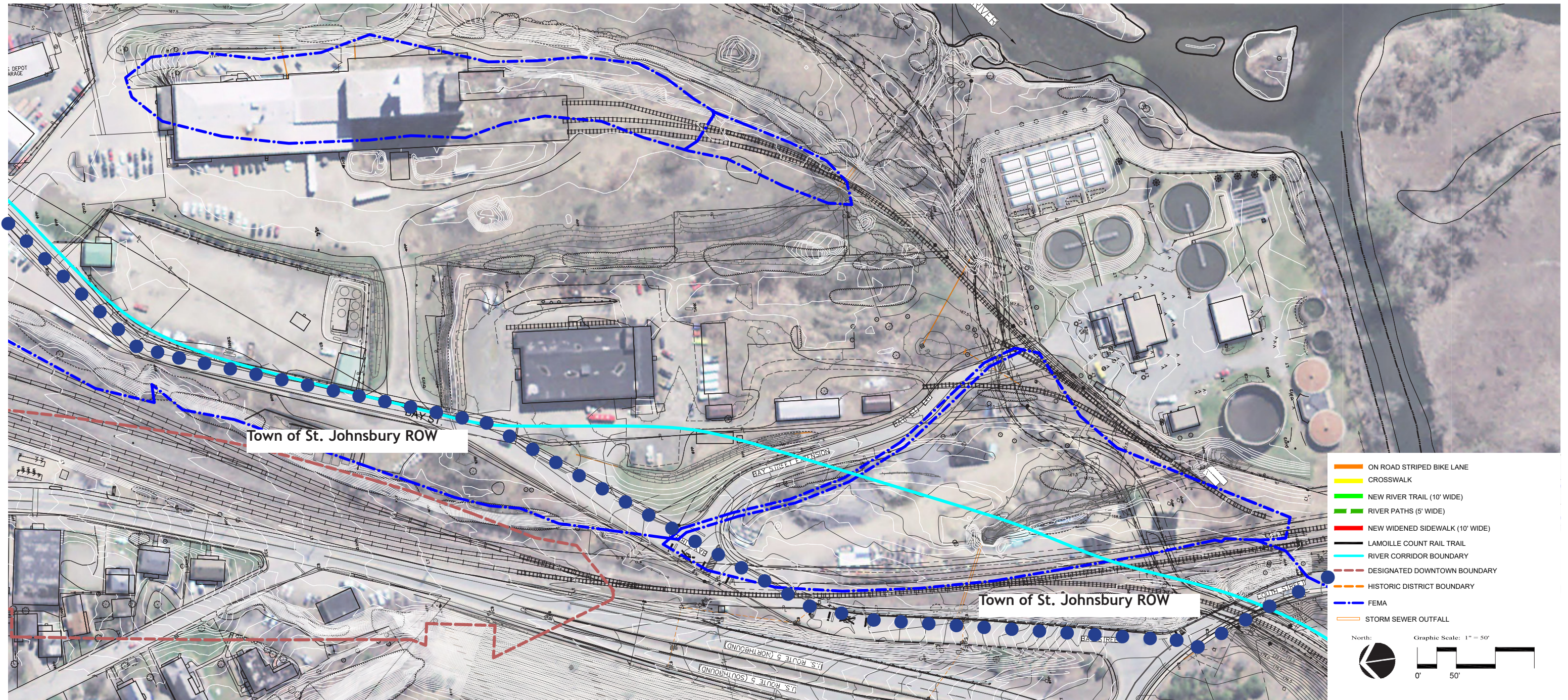
- ON ROAD STRIPED BIKE LANE
- CROSSWALK
- NEW RIVER TRAIL (10' WIDE)
- RIVER PATHS (5' WIDE)
- NEW WIDENED SIDEWALK (10' WIDE)
- LAMOILLE COUNT RAIL TRAIL
- RIVER CORRIDOR BOUNDARY
- DESIGNATED DOWNTOWN BOUNDARY
- HISTORIC DISTRICT BOUNDARY
- FEMA
- STORM SEWER OUTFALL

North:

Graphic Scale: 1" = 50'

0' 50'

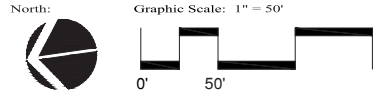




Town of St. Johnsbury ROW

Town of St. Johnsbury ROW

- ON ROAD STRIPED BIKE LANE
- CROSSWALK
- NEW RIVER TRAIL (10' WIDE)
- RIVER PATHS (5' WIDE)
- NEW WIDENED SIDEWALK (10' WIDE)
- LAMOILLE COUNT RAIL TRAIL
- RIVER CORRIDOR BOUNDARY
- - - DESIGNATED DOWNTOWN BOUNDARY
- - - HISTORIC DISTRICT BOUNDARY
- · - · - FEMA
- STORM SEWER OUTFALL

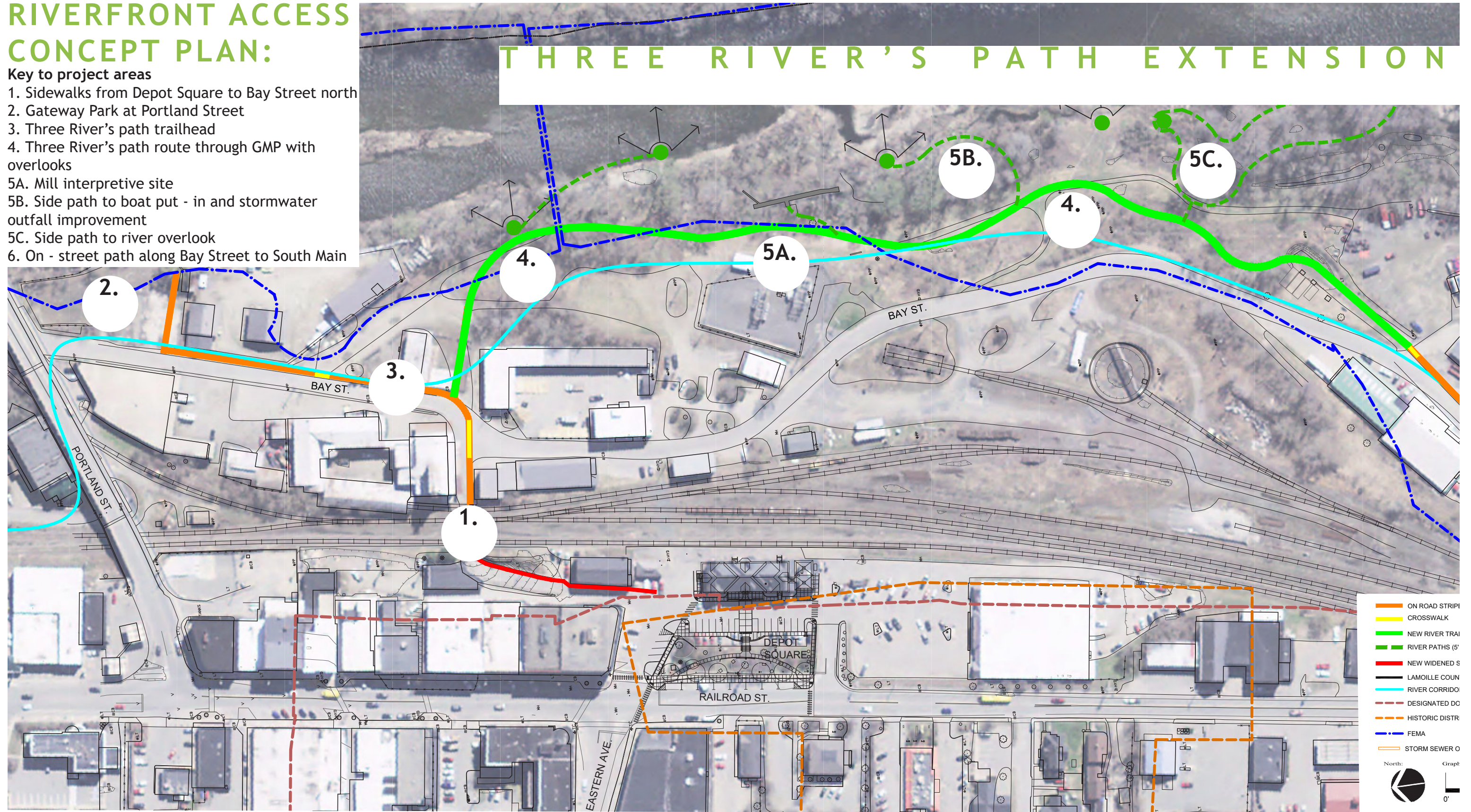




# RIVERFRONT ACCESS CONCEPT PLAN:

## Key to project areas

1. Sidewalks from Depot Square to Bay Street north
2. Gateway Park at Portland Street
3. Three River's path trailhead
4. Three River's path route through GMP with overlooks
- 5A. Mill interpretive site
- 5B. Side path to boat put - in and stormwater outfall improvement
- 5C. Side path to river overlook
6. On - street path along Bay Street to South Main



# THREE RIVER'S PATH EXTENSION

# DOWNTOWN CONNECTIONS TO DEPOT SQUARE



# BAY STREET CONNECTION TO LAMOILLE VALLEY RAIL TRAIL

